

# STIX 'N' STONES

## LUXURY VINYL TILE

### THE MOST ADVANCED INSTALLATION SYSTEM IN LVT FLOORING

Speed of Installation | Speed to Occupancy | Design Versatility | Easy to Replace  
Heavy Commercial Construction | Extreme Durability | Realistic Visuals

STIX® with its factory applied adhesion system can be installed faster than conventional dry back LVT tile. With no dry or set time required for STIX® down time is minimized and can be walked on immediately after installation.

TECHNICAL SPECIFICATIONS		
SIZE WIDTH	12"	184mm & 228mm
SIZE LENGTH	24"	1220mm
OVERALL THICKNESS	1/8"	3mm
WEAR LAYER THICKNESS	22 mil	0.55mm
WEAR LAYER	PU/Polyurethane	
EDGE DETAIL	Bevelled	
CARTON SIZE	35.95sf	3.34m2
WARRANTY RESIDENTIAL	20 Year Limited	
WARRANTY COMMERCIAL	10 Year Limited Heavy Commercial	



FLOWSTONE TRAVERTINE



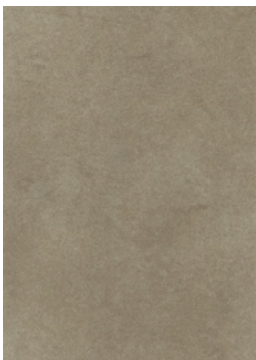
CARBON TRAVERTINE



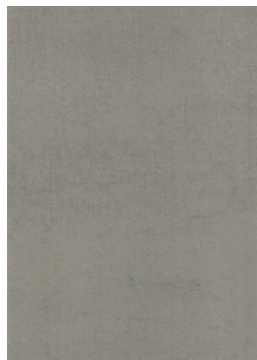
IRON STONE



EPSON STONE



PINFIRE BEIGE



MICA GREY



SLATE GREY



CARRARA GREY